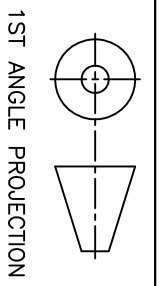
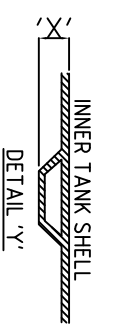


IMPORTANT INVERT LEVEL NOTE (RIBBED TANKS ONLY):
 The inlet and outlet Invert Level(IL) shown on this drawing is to internals of the shell unless otherwise stated.
 For Invert level to the outside of the shell ribs, see the conversion below:
 ø1.0m, 1.2m, 1.5m, 1.8m, 2.5m IL+50mm ('X')
 ø3.0m, 4.0m IL+75mm ('X')

TANKS SUPPLIED WITH LOOSE SHAFTS DO NOT COME SUPPLIED WITH A FIXING KIT.
 THIS IS THE RESPONSIBILITY OF THE SITE CONTRACTOR.



REV.	DATE	BY	CHKD.	RP	APPD.	DESCRIPTION	
1	23.03.09	RU	PB	RP		ISSUED FOR INFORMATION	
A3	DO NOT SCALE IF IN DOUBT ASK ALL DIMENSIONS IN MM		GENERAL TOLERANCES (unless noted otherwise) GRP FABRICATED MACHINED		LINEAR	± 5mm ± 2mm ± 0.5mm	ANGLE ±0.5° ±0.2° ±0.1°

DRAWN BY RU		CHKD. PB		APPD. RP		SCALE NTS	DRAWING No. CP65.0 SALES	REVISION 1
DATE 23.03.09		DATE 23.03.09		DATE 23.03.09				

TITLE
 CP65.0 – 65,000L
 CESSPOOL

THIS DRAWING IS THE PROPERTY OF
 PREMIER TECH AQUA Ltd. AND IS NOT TO BE
 COPIED IN PART OR WHOLE WITHOUT PERMISSION