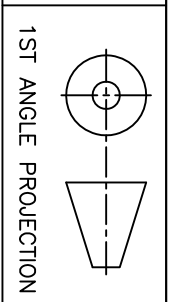
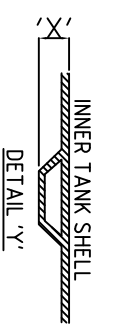


IMPORTANT INVERT LEVEL NOTE (RIBBED TANKS ONLY):
 The inlet and outlet Invert Level(IL) shown on this drawing is to internals of the shell unless otherwise stated.
 For Invert level to the outside of the shell ribs, see the conversion below:
 $\phi 1.0m, 1.2m, 1.5m, 1.8m, 2.5m$ IL +50mm ('X')
 $\phi 3.0m, 4.0m$ IL +75mm ('X')

TANKS SUPPLIED WITH LOOSE SHAFTS DO NOT COME SUPPLIED WITH A FIXING KIT.
 THIS IS THE RESPONSIBILITY OF THE SITE CONTRACTOR.



TITLE
 CP60.0 – 60,000L
 CESSPOOL

REV.	DATE	BY	CHKD.	APPD.	DESCRIPTION
1	23.03.09	RU	PB	RP	ISSUED FOR INFORMATION
A3	DO NOT SCALE IF IN DOUBT ASK ALL DIMENSIONS IN MM		GENERAL TOLERANCES (unless noted otherwise) GRP FABRICATED $\pm 5mm$ MACHINED $\pm 2mm$		THIS DRAWING IS THE PROPERTY OF PREMIER TECH AQUA Ltd. AND IS NOT TO BE COPIED IN PART OR WHOLE WITHOUT WRITTEN PERMISSION

DATE	DATE	DATE	SCALE	DRAWING No.	REVISION
23.03.09	23.03.09	23.03.09	NTS	CP60.0 SALES	1